

EDC - Quiz

1) Peak inverse voltage is the max. voltage that can be applied to a diode without
a) burning b) destruction c) overheating
d) charging

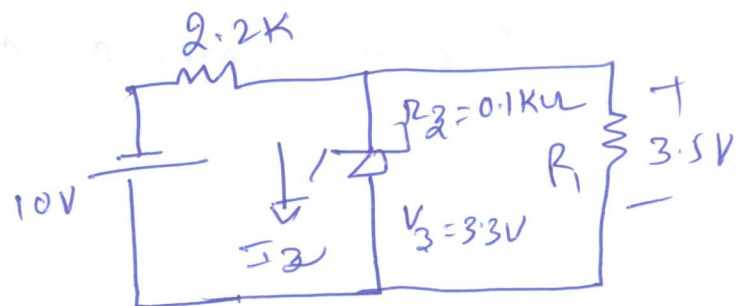
2) The junction capacitance of a linearly graded junction varies with applied reverse bias V_R as
a) V_R^{-1} b) $V_R^{-1/2}$ c) $V_R^{-1/3}$ d) $V_R^{1/2}$

3) Current flow in semiconductor depends on the phenomenon of
a) drift b) diffusion c) recombination
d) All of the above

4) The Schottky barrier diode has
a) one PN junction b) no PN junction
c) two PN junctions c) either a) or b)

5) The current through the Zener diode in figure is

- a) 33 mA
- b) 3.3 mA
- c) 2 mA
- d) 0 mA



6) Tunnel diode is made by following semiconductors
a) highly doped b) sparsely doped c) intrinsic d) none

7) Ripple factor of a full wave rectifier without filter will be
a) 0.2 b) 0.48 c) 0.24 d) 1.21

8) The emitter of a transistor is generally doped the heaviest because it-

- a) has to dissipate maximum power
- b) has to supply the charge carriers
- c) is the 1st region of the carrier
- d) must possess low resistance

9) Early Effect in BJT refers to

- a) avalanche breakdown
- b) thermal runaway
- c) base narrowing
- d) zener breakdown

10) All FETs are basically

- a) power controlled devices
- b) voltage controlled devices
- c) current controlled devices
- d) energy controlled devices